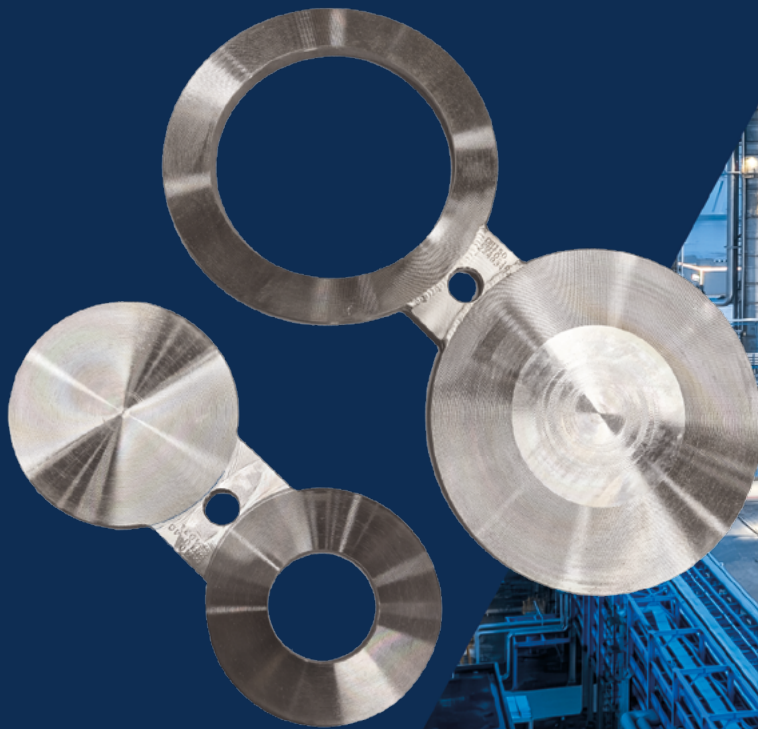


SPECTACLE LINE BLIND

BETWEEN EN1092-1 FLANGES

A spectacle blind, or reversible blind, has the same function as a spade, namely to temporarily stop the supply of (hazardous) substances in a pipeline. If frequent maintenance is performed on the same part of a pipeline, you can opt for a spectacle blind. This can remain mounted to the flange and be rotated if the supply of liquid or gas needs to be stopped.



STANDARD MATERIALS

- Stainless steel
- Carbon steel
- Other materials on request

Also available in ASME B16.48 and JIS B-2220.

Steekflens manufactures Spectacle Line Blinds according customer specifications also.

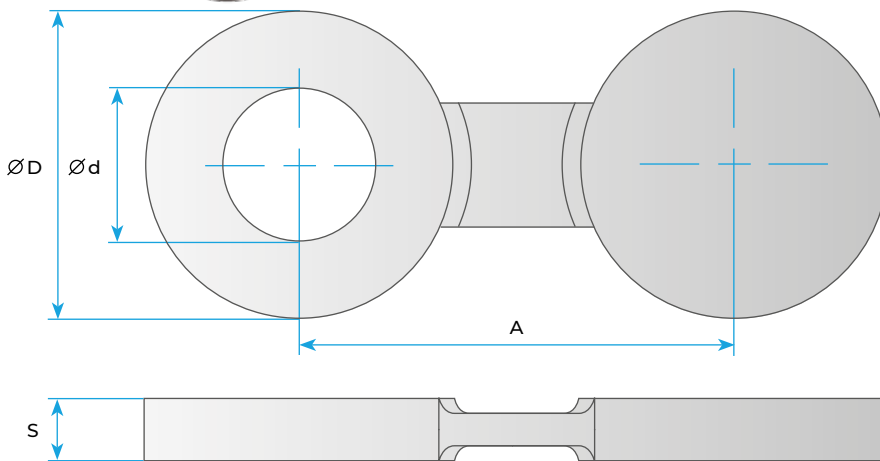
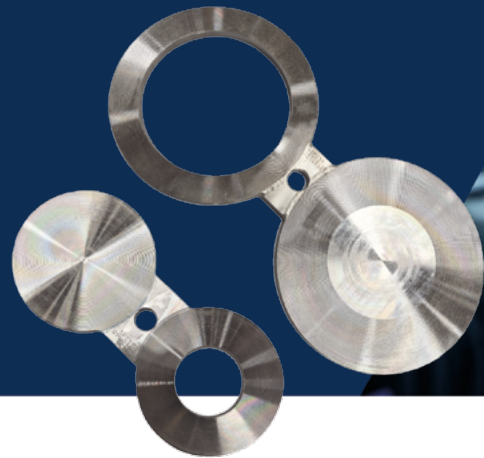
PRODUCT PORTFOLIO

- Spades in steel and stainless
- Spectacle Blinds
- Safety spades
- Drain Flanges
- Orifices
- Test flanges
- Blindflanges
- Entry Blockers (manhole covers)
- Flange cards
- Flange management



STEEKFLENS

SPECTACLE LINE BLIND BETWEEN EN1092-1 FLANGES



SHEET THICKNESS

The indicated thicknesses are theoretical thicknesses. However, Steekflens will always use the standard trade plate thicknesses. As a result, the thickness of the blindspades could end up being higher than the theoretical thicknesses. When machining the flanges (e.g. gasket surfaces), Blindspades and Spectacle blinds can be delivered in 2 (welded) parts. Welding complies with ASME B 16.48-2010 chapter 4.1. Other dimensions according customer specification available on request.

PN10

DN	A	D	d	S
15	See PN16	See PN16	See PN16	See PN16
20				
25				
32				
40				
50				
65				
80				
100	See PN16	See PN16	See PN16	See PN16
125				
150				
200	322	273	215	10
250	380	328	270	10
300	440	378	320	15
350	500	438	365	15

PN16

A	D	d	S
96	51	19	5
106	61	25	5
116	71	32	5
128	82	40	5
138	92	46	5
158	108	58	8
178	127	74	8
192	142	86	8
220	162	112	8
240	192	135	8
266	218	165	8
322	273	215	15
380	328	270	15
440	383	320	15
506	444	365	20

PN25

A	D	d	S
See PN40			
See PN40			
342	284	215	15
400	340	270	20
462	400	320	20
520	457	365	25

PN40

A	D	d	S
96	51	19	5
106	61	25	5
116	71	32	5
128	82	40	5
138	92	46	5
158	108	58	8
178	127	74	8
192	142	86	8
224	168	112	10
225	194	135	15
280	224	165	15
350	290	215	20
412	352	270	25
476	417	320	25
532	474	365	30

Bigger sizes on request. Other pressure class on request.



Lue lisää:
www.starline.fi/steekflens

